

MLAB

Tiziana Refice

IMC 2012

What and who is M-Lab?

Measurement Lab is a collaborative, researcher-driven platform that empowers **Internet users**, **researchers**, and **regulators** with freely accessible open data about network performance.



At every level, data are necessary



- **For Internet users**

- Which Internet Service Provider should I use?
- Am I getting what I am paying for?
- What's going on with my connection?!

- **For policy makers**

- Sound broadband regulation to foster competition and economic growth.



- **For researchers**

- Better understanding of Internet dynamics.
-

M-Lab's founding principle: Openness

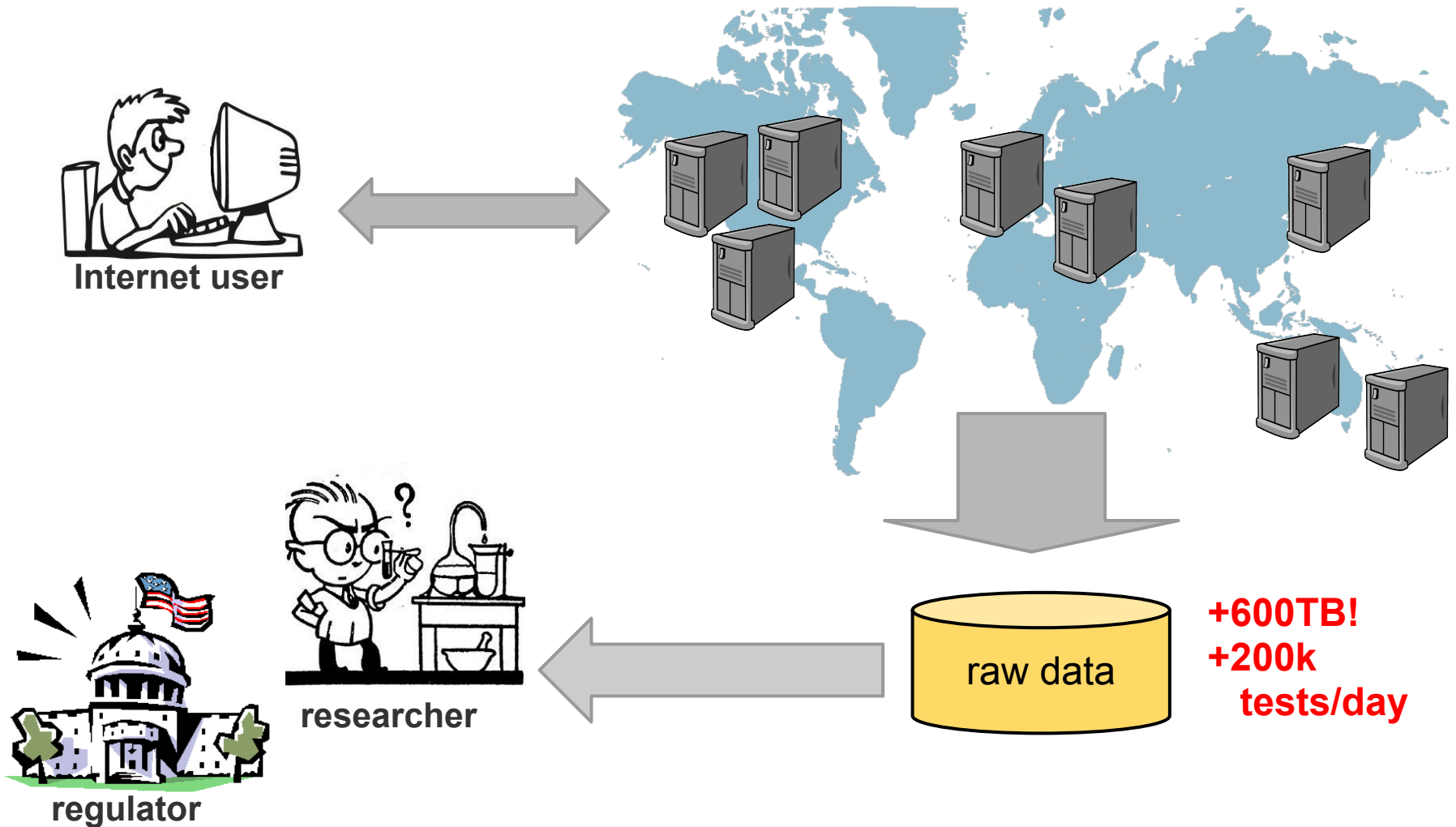
Rigorous openness at all steps of the process

- To facilitate **independent peer-reviews**
- To support **long-term validity** and **credibility**
- To allow to **build on top of existing results**

We provide:

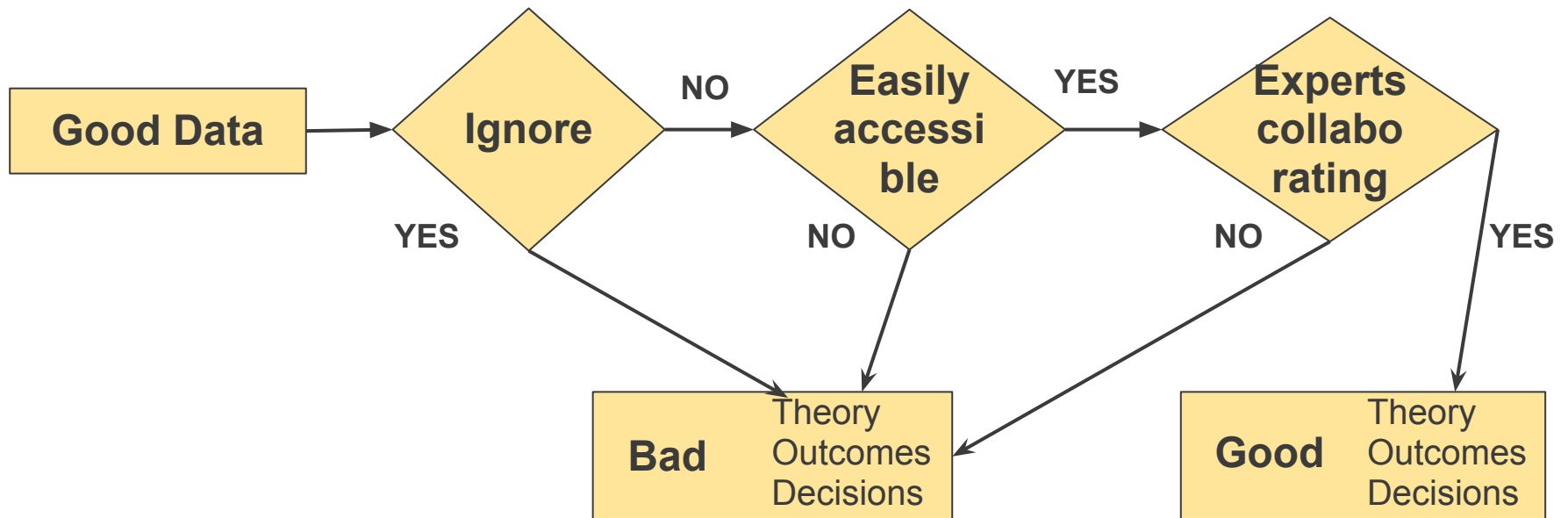
- **Open source**, publicly documented **server platform**
 - **Open source measurement tools** built by researchers
 - **Openly available**, freely accessible **data**
-

M-Lab's ecosystem



Good data outlives bad theory

From Steven Bauer's presentation



Why use M-Lab?

- You are doing all these things that are **not research**:
 - Deploy and manage servers.
 - Collect and store data.
 - Publish data in an easily accessible way.
 - We do that for you!
 - You can now do these things that **are research**:
 - Create new measurement methodologies.
 - Build new measurement tools.
 - Analyze and visualize data collected by your tools **or others'**.
-

Thank you!

Come and talk to us about M-Lab's research grants!

More info at <http://measurementlab.net>
